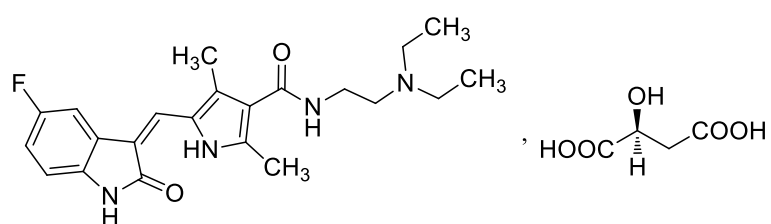




-----





1 9  
 23 11%  
 59 29%

1 1.8  
 31 30%

2 3.0  
 1 6  
 7% 6%

1 3 4  
 10%

1 2  
 56% 51%

**1.** **1** **GIST**  
 ≥10% \*

	<b>GIST</b>			
	<b>(N=202)</b>		<b>(N=102)</b>	
	<b>%</b>	<b>3/4</b> <b>%</b>	<b>%</b>	<b>3/4</b> <b>%</b>

2

10%

2.

1

GIST

≥10% \*

	GIST			
	(N=202)		(N=102)	
	%	3/4 <sup>a</sup> %	%	3/4 <sup>b</sup> %
/				

\* CTCAE 3.0

ALT= 4      AST= 1%      GIST= 2%      LVEF= 1%      N= 2%

<sup>a</sup> 2%      1%

<sup>b</sup> 4      1%      1%      2%

RCC 3

4/2

3. 3 IFN- RCC ≥10% \*

	RCC			
	(N=375)		IFN- (N=360)	
	%	3/4 <sup>a</sup> %	%	3/4 <sup>b</sup> %

	RCC			
	(N=375)		IFN- (N=360)	
	%	3/4 <sup>a</sup> %	%	3/4 <sup>b</sup> %

	RCC			
	(N=375)		IFN- $\alpha$ (N=360)	
	<sup>*</sup> %	<sup>3/4</sup> <sup>*a</sup> %	<sup>*</sup> %	<sup>3/4</sup> <sup>*b</sup> %
/				

---

5.		6 $\geq 10\%$
*		
(N=83)		

**6. 6 ≥10%**

		*	<sup>a</sup>		*	<sup>b</sup>
	%	3/4 %		%	3/4 %	
	82	72	5	80	70	3
	82	61	4	80	55	3
	82	63	10	80	70	11
	82	37	1	80	28	4
	74	20	4	74	10	1
	75	17	5	72	11	4
/	82	71	12	80	78	18
	81	41	1	79	37	1
	81	36	7	77	22	5
	82	34	0	80	19	0
	82	29	2	80	34	3
	82	27	5	80	28	5
	82	22	2	80	15	4
	82	21	4	80	14	0
	52	19	0	39	10	0
	82	18	1	80	11	1
	82	71	16	80	16	0
	82	65	0	80	55	1
	82	60	5	80	15	0
	82	56	7	80	35	4

\* CTCAE 3.0

ALT= AST= N= pNET=

<sup>b</sup> 4 3% 1% 1% 1%

AEs

A6181177	1	2	3
64.4%	52.5%	50.8%	

**8. A6181132**

**A6181034**

\*

	A6181132 n=105			A6181034 n=375		
	%	3/4	%	%	3/4	%
	63.8	23.8		28.8	8.5	
	52.4	8.6		10.7	3.5	
	51.4	6.7		62.1	14.7	
	51.4	21.9		19.2	9.1	
	48.6	6.7		12	2.4	
	42.9	4.8		18.7	10.9	
	39.0	14.3		21.6	8.5	
	37.1	7.6		30.4	1.3	
	37.1	10.5		46.4	0.3	
	28.6	1.9		10.7	3.5	
	27.6	0		29.1	1.6	
	27.6	1.9		-	-	
	26.7	4.8		16.3	1.6	
	24.8	1.9		10.7	3.5	
	24.8	0		62.1	14.7	

\* A6181132

2012 4 28

A6181034

2009 5 5

-

**RPLS**

-

65



CHF

LVEF

	-		GIST	1	
22/209	11%	3/102	3%		
LVEF		LLN	22	LVEF	9
5		1		4	
6					



≧

**ONJ**

ONJ

ONJ  
ONJ

ONJ

ONJ

**TLS**

4

/

---

RDD AUC 5.5 0.3

2%-4%

15%-20%

12

4

---

4

7



RTK

80 PDGFR PDGFR

KIT Fms -3 FLT3 1 VEGFR1 VEGFR2 VEGFR3 CSF-1R

RTK RET

Ames

0.5 1.5 5 mg/kg/ 5 mg/kg/ 21 7

RDD AUC 5

3 RDD AUC 1

AUC 5 2 6 12 mg/kg/ 12 mg/kg/ RDD

0.4 9 0.3 1.5 6 mg/kg/ RDD AUC

RDD AUC 0.5  
 2

3 mg/kg/ RDD AUC

15 mg/kg  
 12

8 0.3 1.5 6.0 mg/kg/ 3 2 6 12 mg/kg/  
 AUC RDD  
 0.4 3 1.5 5.0 15.0 mg/kg  
 5 0.3 1.5 6.0 mg/kg/  
 RDD 10  
 >5 mg/kg

3 8  
 1.5 mg/kg/

rasH2 SD rasH2  
 1 6 /  
 8 mg/kg/

2 28 7 1mg/kg/ RDD  
 AUC 0.9 3 mg/kg/ RDD AUC 7.8

6 12 [T<sub>max</sub>]

C<sub>max</sub>

100 4000 ng/ml 95% 90%  
 mg AUC Vd/F 2230L 25 100  
 C<sub>max</sub>

GIST

/

RCC

---

ECOG

- -

-

-

-

CLcr 50-80 mL/min

CLcr 30-<50 mL/min

CLcr <30 mL/min

ESRD

47%

